

WATER FUN AND CAMPGROUNDS

In and Around Alberta's Irrigation Districts



Alberta Irrigation
PROJECTS ASSOCIATION
www.aipa.org

**Water Fun
and Campgrounds**
(2016 Prices)

DAY USE AND OVERNIGHT CAMPING PERMIT

- ☒ PARKS
- ☒ CAMPSITES
- ☒ GOLF COURSES
- ☒ FISHING HOLES

IN AND AROUND ALBERTA'S IRRIGATION DISTRICTS

Inside see descriptions of 22 parks,
and a list of 20 other campsites, 29 golf
courses and 58 fishing spots in southern
Alberta supported by irrigation water.

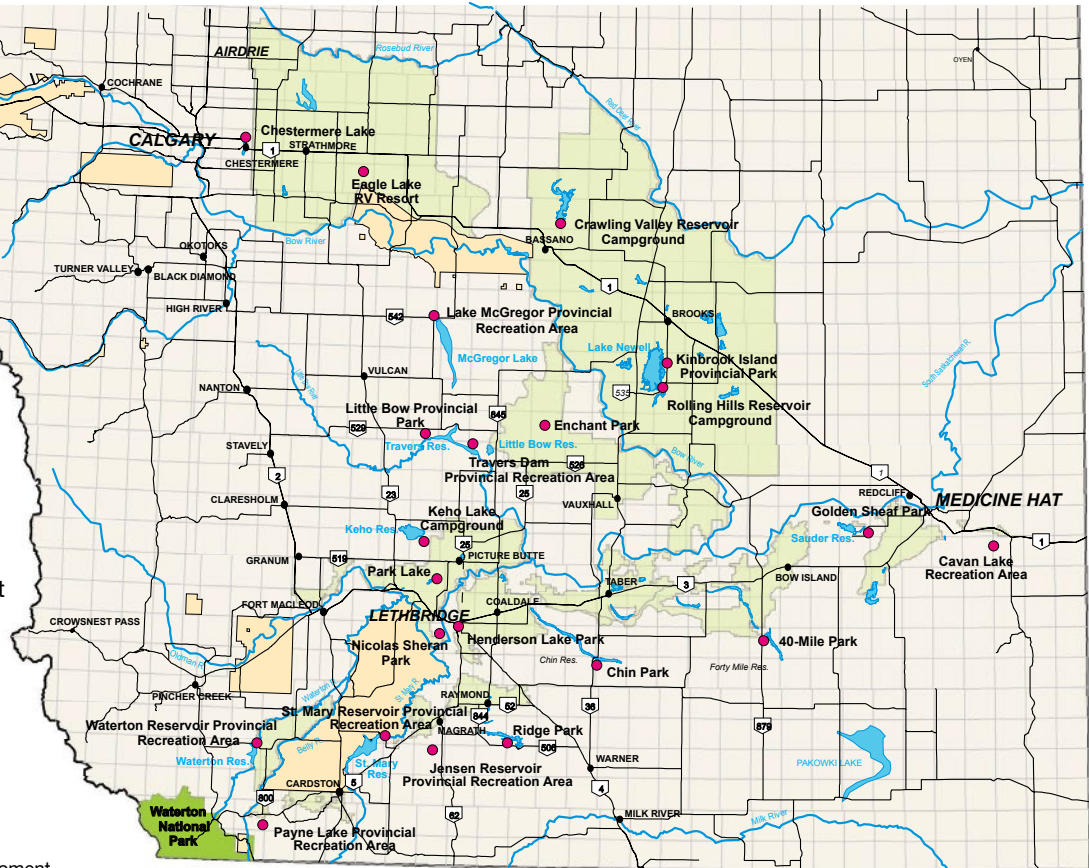
00721

Map of Irrigation-Based Recreation Sites	2
Map of Irrigation Districts	3
Irrigation Reservoirs in Alberta	4
Facility and Activity Symbols	5
Calgary to Brooks Route — Highway 1	6
Chestermere Lake, Eagle Lake RV Resort, Crawling Valley Reservoir Campground, Kinbrook Provincial Park, Rolling Hills Reservoir Park	
Lethbridge to Vulcan Route — Highways 3, 25, & 23	11
Henderson Lake Park, Nicholas Sheran Park, Park Lake Provincial Park, Keho Lake Campground, Little Bow Provincial Park, Travers Reservoir Provincial Recreation Area (PRA), Lake McGregor PRA, Enchant Park	
Taber to Medicine Hat Route — Highway 3	18
Chin Park, Forty-Mile Park, Golden Sheaf Park, Cavan Lake Park	
Waterton to Warner Route — Highways 4, 5, & 52	23
Payne Lake PRA, Waterton Reservoir PRA, St. Mary Reservoir PRA, Ridge Park, Jensen Reservoir PRA	
Other Campgrounds Supplied Water by Alberta's Irrigation Districts	29
Golf Courses Supplied Water by Alberta's Irrigation Districts	30
Fishing Holes: Irrigation-Based Reservoirs, Lakes, Ponds, etc.	31

Map of Irrigation-Based Recreation Sites

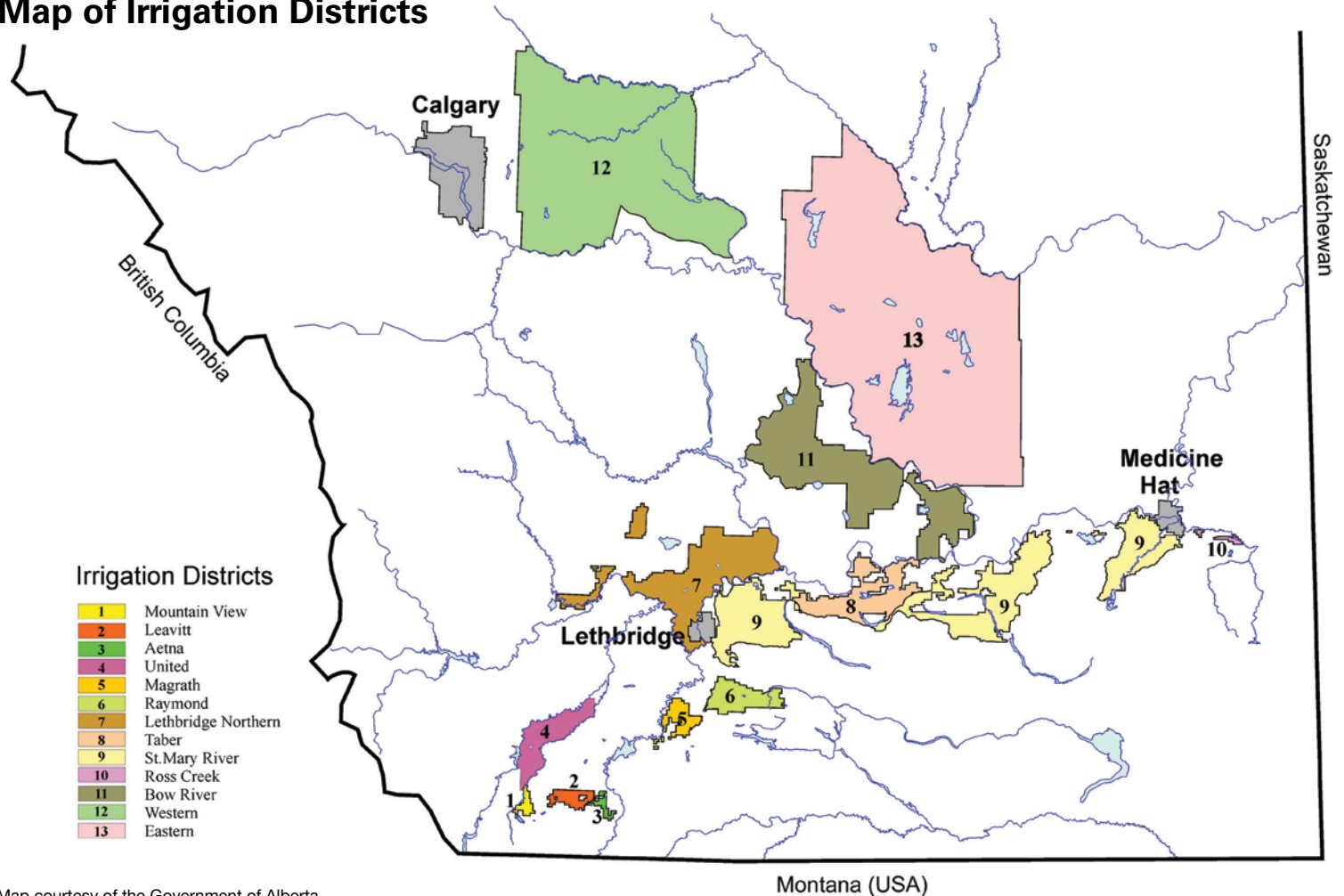
● Irrigation-based recreation sites

The recreation opportunities described in this booklet are here for your enjoyment as a result of the efforts of various Counties, Municipal Districts, Towns, Cities, Community Associations, Private Enterprises, the Government of Alberta, and Alberta's Irrigation Districts.



Map courtesy of Alberta Agriculture and Rural Development

Map of Irrigation Districts



Map courtesy of the Government of Alberta

Irrigation Reservoirs in Alberta

Calgary to Brooks

Western Irrigation District

Chestermere Lake, Langdon Reservoir

Eastern Irrigation District

Cowoki Reservoir, Crawling Valley Reservoir,
J Reservoir, Kitsim Reservoir, Lake Newell,
One Tree Reservoir, Rock Lake, Rolling Hills Reservoir,
Snake Lake, Tilley "A" Reservoir, Tilley "B" Reservoir

Lethbridge to Vulcan to Vauxhall

Lethbridge Northern Irrigation District

Keho Lake*, Park Lake, Picture Butte Reservoir

Bow River Irrigation District

Badger Reservoir, H Reservoir, Little Bow Reservoir*,
Lost Lake, McGregor Lake*, Scope Reservoir,
Travers Reservoir*

{The four districts in the St. Mary Project are supplied from
the same reservoir sources}

* Multi-use reservoirs owned and operated by Alberta Environment

Lethbridge to Medicine Hat

St. Mary River Irrigation District

Bullshead Reservoir, Chin Reservoir, Cross Coulee Reservoir,
Forty Mile Reservoir, Murray Reservoir, North East Reservoir,
Raymond Reservoir, Sauder Reservoir, Seven Persons Reservoir,
Sherburne Reservoir, Stafford Reservoir, Yellow Lake
{Jensen Reservoir*, Milk River Ridge Reservoir*,
St. Mary Reservoir*, Waterton Reservoir*}

Taber Irrigation District

Fincastle Reservoir, Horsefly Reservoir, Taber Lake
{Jensen Reservoir*, Milk River Ridge Reservoir*,
St. Mary Reservoir*, Waterton Reservoir*}

Ross Creek Irrigation District

Cavan Lake*

Waterton to Warner

Mountain View Irrigation District, Leavitt Irrigation District, Aetna Irrigation District

Payne Lake*

United Irrigation District

Cochrane Lake, Waterton Reservoir*

Magrath Irrigation District

{Jensen Reservoir*, St. Mary Reservoir*, Waterton Reservoir*}

Raymond Irrigation District

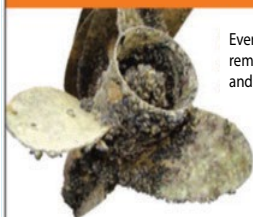
Corner Lake, Craddock Reservoir, Factory Lake
{Jensen Reservoir*, Milk River Ridge Reservoir*,
St. Mary Reservoir*, Waterton Reservoir*}

Facility and Activity Symbols

**Keep Invasive Mussels out
of Alberta's Reservoirs and Lakes**

Clean • Drain • Dry

Attention: Boaters and Anglers



Every time you remove your boat from the water, remember to **Clean**, **Drain** and **Dry** your watercraft and equipment.



Zebra Mussels



Quagga Mussels



Eurasian watermilfoil

Clean and inspect watercraft, trailer and gear. Remove all plants, animals and mud.

Drain all water from bait buckets, coolers, bilges, internal compartments, livewells ballasts, transom and motors.

Dry watercraft and gear completely between trips. Sponge out standing water and allow the wet areas of your boat to air dry.

Inspect and remove plants, animals and mud.



Report any mussels that are attached to your boat.

1-855-336-BOAT (2628)
www.wildalberta.com

Alberta
Government



Beach



Bicycling



Bird watching



Boat launch



Canoeing



Commercial dining



Commercial lodging



Campfires permitted



Confectionary



Fishing



Flush or pit toilets



Golfing



Group camping



Hiking or walking trails



Kayaking



Large grass play area



Marina



Motorhome camping



Motorized boating



Pets on leash



Picnic grounds



Playground



Public telephone



Sailing/Yacht Club



Showers and restrooms



Swimming



Tenting



Trailer dump



Wheel-chair accessible

Chestermere Lake 403.235-6601
-- DAY USE ONLY --

BOAT: \$40/launch/boat
 PERSONALIZED WATERCRAFT: \$30/launch/watercraft
 NON MOTORIZED WATERCRAFT: \$10/launch/unit
 Boats not using boat launch - no charge
 -5 km east of the outskirts of Calgary on Hwy 1-

Chestermere Lake

Sitting just 5 minutes east of the City of Calgary, the community of Chestermere surrounds a small reservoir of the Western Irrigation District known as Chestermere Lake. Though the district still owns the reservoir, its use accommodates many recreational activities. Homes surrounding the reservoir are the backdrop for jet skis, boats towing water skiers, sailboats, and other water craft out for a more-leisurely trip. An occasional fishing line reaches from shore to fish, and picnickers enjoy the waterside grassy areas and tables.

At the south end of West Chestermere, the Western Headworks Pathway begins and runs along the inlet canal coming from the Bow River. The paved pathway connects to the extensive Calgary Bike Path system.





Eagle Lake RV Resort

Just 40 minutes to the east of Calgary, this privately owned and operated campground provides a quiet rendezvous in a pastoral setting amongst sprawling farm fields. The resort offers many amenities including showers, flush toilets, boat rentals, a small convenience store, a beach, mini-golf, horseshoes, etc. Eagle Lake, part of the Western Irrigation District, varies in its levels but still provides good fishing for walleye, pike and perch.

A broad grassy area and play ground make staying dry enjoyable for those land lubbers who like to have fun too. Both serviced and unserviced campsites are available; the price also varies with the length of stay and is higher for long-weekends.



EAGLE LAKE RV RESORT

eaglelakervresort.com

(403) 934-4283

7 km east of Strathmore on Hwy 1,
and 6 km south on Range Road 243

Crawling Valley

Surrounded by a wide expanse of open native prairie near Bassano, Alberta, the Crawling Valley recreation site is a fisherman's delight. The constructed harbour and boat launch make access to the water easy. Pike up to 20 pounds have tested the skills of many a fisherman and a walleye fishery is now well established. The reservoir is a popular spot for ice fishing in the winter, with an annual derby in March.

If a place to shower makes or breaks your decision to come to a campsite, then you can add this one to your "must stay" list. Spacious campsites are usually occupied by 5th Wheels or motor homes, but tents also dot the campgrounds. A playground with some novel "large pipe" play area gives kids a chance to do what they do best – have fun. A family bike ride along the various roadways is a relaxing way to make fond family memories. For a first time visit, follow the signs and you will eventually get to this oasis in what seems to be an empty landscape.



CRAWLING VALLEY CAMPGROUND

156 CAMPSITES

156 POWER \$30 / NIGHT
10 NON-POWER TENT
SITES \$25 / NIGHT

WWW.CRAWLINGVALLEYCAMPGROUND.CA

403-641-4095

3 KM NORTHWEST OF BASSANO, TURN
OFF HWY 1, THEN FOLLOW SIGNS
4 KM EAST AND 3 KM NORTH
THROUGH OPEN PRAIRIE.



Kinbrook Island Provincial Park Receipt & Permit

169 CAMPSITES, 79 SERVICED Tel: 1.877.537.2757

☐ NON SERVICE SITE: \$28/NIGHT

☐ SERVICE SITE: \$35/NIGHT

10 km south of Brooks on Hwy 873 (extension of 7st SE, Brooks)
www.AlbertaParks.ca



Kinbrook Island Provincial Park

If you love sailing, bird watching, lazing on the beach, swimming or fishing, then Kinbrook Island Provincial Park is a must. Rich in wetlands, trees and shrubs, this area boasts over 200 species of birds that either make their home in the park or use it as a stopover on their migration. An interpretive marsh trail will get you close to water-loving bird species such as pelicans, grebes, terns, cormorants, herons and gulls, and a stroll through the grounds will reveal sights and sounds of birds you haven't seen before.

This park on Lake Newell, a large reservoir in the Eastern Irrigation District, has been a favourite for generations. The large sandy beach stretches into the reservoir and back onto a pleasant grassed and treed picnic area. Close by is the marina, where sailboats, motorized boats, and wind surfers take flight. Many of the 169 campsites are spacious with mature trees around them. Large group areas and individual campsites can be reserved.



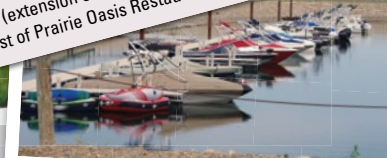
Rolling Hills Reservoir Campground

On your drive to this campsite, you will pass through a wide expanse of rolling native grass prairie, with herds of cattle and the sight of oil well pump jacks on the landscape. Recently created by the Eastern Irrigation District, this campground features 152 serviced camping sites, showers, washrooms, a laundry facility, a trailer dump station, and group areas alongside the west edge of the Rolling Hills Reservoir. Campers have access to potable water, a marina, a boat launch, a playground, and a day use area as well. Though planted in 2004, the trees in the campground are now large enough to provide some shade and greenery.

You can enjoy sun, sand and swimming as well as a variety of boating activities such as water skiing and fishing. There's an ample catch limit on pike, perch and whitefish, but walleye are catch and release.



Welcome to
Rolling Hills Reservoir Campground
Info at: 403-362-1400
152 campsites \$35/night
20 km south on Hwy 873 (extension of 7st SE) south of Brooks,
or 8km on gravel road east of Prairie Oasis Restaurant on Hwy 36



Henderson Lake Park

Henderson Lake Park is beautifully set in mature umbrella-like elms and boasts a forest of mature and colourful trees and shrubbery. The City of Lethbridge began the development of the park and surrounding recreational features in 1912 and has created a rare opportunity to enjoy wide open spaces in an urban setting.

Henderson Lake, a small 24 ha (60 acre) reservoir formerly in the St. Mary River Irrigation District, provides the water focal point for the park. Paved pathways circle the lake and meander through the greenery and over bridges. People of all ages enjoy the walking, rollerblading and casual bike riding offered by the trails. Several picnic shelters offer a gathering place amongst the greenery. The new playground is near the dock and provides the challenge that many children enjoy. No motorized boats are allowed on the lake, but along with seasonal use of canoes and paddle boats, dragon boat races bring mayhem to the shores and water periodically.

Many other venues surround the Park; the regionally famous Nikka Yuko Japanese Gardens, Henderson Lake Golf Course, a 10-pitch Horse Shoe park and picnic area, tennis courts, Henderson Ball Park, Henderson Swimming Pool, and Henderson Ice Arena.



Henderson Lake Park

DAY USE ONLY

Picnic shelter rental: 403-320-3009

City of Lethbridge: turn east off Mayor Magrath Drive
onto Parkside Drive South (east of 7th Ave)

Nicholas Sheran Park

Nicholas Sheran Park is a 106-ac day-use park in the heart of West Lethbridge. The 5.6 km of paved and shale trails are well used for gentle bike rides, walking the youngsters in baby buggies, jogging, blading and by those out for a leisurely stroll. An extensive playground and a nearby picnic shelter provide a stopping place along the walkway that wraps around the small lake in the centre of the park. This water feature is fed by the Lethbridge Northern Irrigation District, and nestles among expansive green lawns and groups of mature trees.

A novel attraction at Nicholas Sheran Park is the 18-hole disc (Frisbee) golf course. The course helps you explore the park as do errant discs that on occasion wind up in the lake. Large trout are stocked in the pond and year-round fishing is available.

Ball diamonds, a soccer pitch and basketball hoops are located at the north end of the park.



Nicholas Sheran Park
DAY PASS

S M T W T F S

West Lethbridge; turn south off Whoop-up Drive onto McMaster Blvd; 2.5 km to parking area at park on east side of road

A group of six people are sitting on a dark beach blanket on a sandy beach. In the back row, a woman in a yellow tank top sits between two children. In the front row, a man in a blue cap and a woman in a black tank top sit on either side of a child in a white dress. A large blue cooler is on the right. The photo is tilted and has a white border.

A group of people are kayaking on a river. The kayakers are wearing life jackets and using paddles. The river is surrounded by dense green trees and foliage. The water is calm, reflecting the surrounding greenery.



ARRIVAL DATE: MAY 11
DEPARTURE DATE: OCT 31

DEPARTURE DATE: _____

☐ NON SERVICE SITE: \$24/NIGHT

☐ SERVICE SITE: \$31/NIGHT

CAMPSITES: 54

POWER CAMPSITES:	54
TOTAL CAMPSITES:	72

Travel Hwy 3 east of Lethbridge; take Picture Butte turnoff; travel 5 km north to Park Lake sign; turn left off Hwy 25 following park signs (1.2 km north, 1.6 km west, 3.2 km north).

Info 403-382-4097 www.albertaparks.ca

Keho Lake Campground

Keho Lake Campground 403-824-3666

DIRECTIONS:

Turn off Hwy 23 at Nobleford onto Hwy 25; travel 8 km east then 7 km north on secondary road 812; dead-ends at campsite.

Some of the larger pike caught in the Province come out of Keho Lake, the main reservoir for the Lethbridge Northern Irrigation District. Keho Lake not only is a great fishing spot, but is one of the better kite/wind surfing lakes in the Province. Many access sites for surfing are available and a private club is located on the north side of the reservoir. The annual fee of just \$20 gives you access to a campground and a great launch area.

A public 9-hole golf course and small camp ground are situated on the south side of the reservoir. When you camp at Keho Lake Campground, you can walk out of your RV and step onto the greens, since the camp ground adjoins the Club House. Slicers watch out: you might have to go for a swim to retrieve your ball on the first hole, which is bounded on the north by the reservoir. One other water hazard awaits you on a par-3. The fairways are wide and greens are large. Carts are available, but if you want the exercise, you can walk the course.



Little Bow Provincial Park

This is a large, beautiful park, well cared for and well used. Nestled in the valley of the Little Bow River, the park sits amongst an extensive canopy of mature cottonwood trees and associated shrubbery beside Travers Reservoir. The large "U" shaped beach surrounded by picnic sites provides a great water play area for children and adults alike. Boaters can find ample parking adjacent to the launch, and the paved roads are great for roller blading or a leisurely bike ride. With over 200 camping sites, 83 of which are serviced, the park can accommodate individuals or groups. A reservation is advisable.

The surrounding valley walls of Travers Reservoir provide an interesting motif of colors, shapes and vegetation types. Fishing on this Bow River Irrigation District supply reservoir is productive yielding large walleye, pike, perch, whitefish and the occasional trout. This a popular boating and water skiing reservoir.



TURN EAST OFF HWY 23 JUST NORTH
OF CHAMPION ONTO HWY 529,
DRIVING ON PAVED ROAD TO LITTLE BOW CAMP
SIGN (16 KM), TURN SOUTH, 2KM TO PARK.

LITTLE BOW PROVINCIAL PARK

APRIL 1 - OCTOBER 13
CALL 403-897-3933

POWER SITE/NIGHT	\$33
NON-POWER SITE/NIGHT	\$26
RESERVATION FEE	\$12
TOTAL CAMP SITES	224
ELECTRICAL HOOKUPS	86
DOUBLE SITES	12

GROUP CAMP	
MIN. 10 UNITS/NIGHT	\$310
EACH ADD. UNIT/NIGHT	\$26
GROUP DAY USE /DAY	\$88
RESERVATION FEE	\$12
TOTAL UNITS	25

[WWW.ALBERTAPARKS.CA/
SITEINFORMATION.ASPX?ID=69](http://WWW.ALBERTAPARKS.CA/SITEINFORMATION.ASPX?ID=69)



RUSTIC CAMPING →



Travers Dam Recreation Area

Turn east off Hwy 23, just north of Champion onto Hwy 529; drive 31 km (past Little Bow Park, a much nicer place). You cross between Travers and McGregor Lake 7 km before the next turn. Turn south onto secondary road 843 for 5 km to campsite. Or, turn west at junction of Hwy 845 and Hwy 526. Drive gravel road 6 km to Travers Dam and turn north of dam following road about 3 km to campsite on north shore of reservoir. Fee is \$15 per night.

INFO AT 403-897-3933

This is a rustic campground within wide open spaces. Its isolation is its drawing attraction. If you want to star gaze, to fish in the reservoir, or do day trips to the nearby Little Bow Provincial campground, then this is your spot. The recreation area has little development: a sign, pit toilets, a boat ramp, and a camp kitchen. Dividing the campground, with its 20 camping sites, from the water front is a caragana hedge and a few small shrubs. A cluster of trees to the west of the camp kitchen along a tiny piece of beach gives shade to a couple of picnic tables, and a homemade rope swing from one of the larger trees brings back childhood memories.

This site is not at the dam site itself but can be reached following a gravel road going north from the dam, or by dipping a bit south off of secondary Highway 529. Travers Reservoir itself is a great fishing spot, with many mini-fjords that give structure where large pike and walleye thrive. Whitefish, perch, and other species can be caught where a canal from Lake McGregor drops into the upper part of the reservoir.



Lake McGregor Provincial Recreation Area

Located on the northwest tip of Lake McGregor, this provincial recreation area consists of a large, but somewhat rustic campground and a boat launch. The fishing on this Bow River Irrigation District supply reservoir is popular with Calgarians who can reach the site in an hour's drive. Water skiing, fishing, swimming and wind or kite surfing are popular activities at this reservoir. With little to no light pollution in the area, the night skies are filled with stars.

The campground runs primarily north/south and rows of tall bushes provide a break from winds. Fortunately for campers, winds are at their lowest levels during the months of July and August. This site is conducive to a slow pace of life, with little road traffic despite there being 100 camp sites available.



WELCOME TO LAKE MCGREGOR
403-897-3933

CAMP SITES ARE AVAILABLE ON
A FIRST COME FIRST SERVE BASIS
CAMPING FEE: \$20.00/NIGHT
CHECK OUT TIME, 2 PM
16 KM NORTH OF VULCAN, TURN
EAST OFF HWY 23 ONTO HWY 542
AND TRAVEL ABOUT 24 KM
TO CAMPSITE

www.albertaparks.ca

Enchant Municipal Park

Enchant's penchant for hosting great baseball tournaments resulted in ball players staying overnight on the grassy surroundings in their trailers and campers. Since those early days, a recreation park and campground have grown to include 100 serviced camping sites, a family reunion centre, a museum, a 9-hole golf course, and a constructed beach and swimming area, as well as the ball diamonds. Camp kitchens are available for rent, and laundry facilities, showers, and flush toilets take some of the "roughing it" out of you stay. Camping sites are nestled among mature trees that line the campground, which is immediately south the town of Enchant.



ENCHANT MUNICIPAL PARK

**CAMPING RATES \$20.00 FOR P & T,
150 SITES: 100 POWER SITES 15 AMP POWER**

CALL 403-739-2245
WEBSITE: WWW.MYENCHANT.COM
EMAIL: Park@myenchant.com



Chin Park

Chin Park is a small but pleasant camping area just off Hwy 36 between the towns of Taber and Warner. Twelve serviced camp sites surround a lawn area, which is suitable for tenting. Children will enjoy the playground with high swings, and a camp kitchen adds to the amenities. The dock and boat ramp provide access to Chin Reservoir.

Chin Reservoir is a large, long reservoir in the St. Mary River Irrigation District where boating, water skiing and fishing are enjoyed by campers and day use visitors. A unique curved bridge crosses the reservoir near the campground making for interesting photos when water levels are lower. Across the highway from Chin Park is a Kinsmen Park that can be booked for group camping through the Taber Kinsmen.



CAMP PERMIT

PARK OPEN FROM APRIL 15 - OCTOBER 15

- ☐ DAY USE/BOAT DOCK FEE: \$5
- ☐ NON SERVICE SITE/NIGHT: \$20
- ☐ SERVICE SITE/NIGHT: \$30

About 18 km south of Taber on Hwy 36, immediately off road on south side of reservoir crossing. Turn east off Hwy 36 into campground.

Info seasonally at
www.countyofwarner5.ab.ca 403-222-2285





40 Mile Park & Recreation Area

A large, horseshoe shaped sandy beach is one of the main attractions at 40-Mile Park and Recreation Area. Gently sloped, the beach is ideal for young children, and with a beach umbrella and a good book in hand, many an adult enjoys a relaxing beach experience as they watch their kids enjoy the water play. Numerous campsites, 31 of which are serviced, welcome RV campers and tenters alike.

The Park, situated on a St. Mary River Irrigation District reservoir, is located between Bow Island and Foremost and is managed by the County of Forty Mile. Development around the reservoir includes a number of cabins, homes and permanent trailers, along with a multiplicity of docks for boats, including a public access to the reservoir. Boating, water skiing and fishing are popular activities on the 11 km (7 mi) long lake.

A café, convenience store and showers cater to camper needs.



40 MILE PARK & RECREATION AREA

OCCUPIED

www.40milepark.com
403-867-2181

58 CAMPING SITES (31 SERVICED SITES)

- ☐ DAY USE: \$5
- ☐ NON SERVICE SITE: \$25 /NIGHT
- ☐ SERVICE SITE: \$30 /NIGHT

6 km west of Bow Island turn south off
Hwy 3 onto Hwy 879; travel 16 km due south

20089

Golden Sheaf Park

Boasting the largest number of camping spots (454) of any park on a reservoir in southern Alberta, Golden Sheaf Park offers many campers an opportunity to enjoy the outdoors in the Medicine Hat region. A limited number of those campsites have power. Children enjoy the floating dock in the cordoned-off swimming area, adding to the fun at the beach. Groups can book the camp kitchen, and wide open spaces are available for games. There's also lots of room for RVs and tents.

Mature walleye await the fisherman and some large walleye and pike have been caught in these waters that reach a depth of 22 m (72 ft). Sauder reservoir is part of the St. Mary River Irrigation District system – don't let the locals scare you away with the local name, "Rattlesnake Reservoir" – they just want to keep the fun to themselves.

If showers are a must for your camping experience, add this one to your list.



GOLDEN SHEAF PARK

The visitor must have this permit during the visit.

INFO: 403-832-2189

CAMPING/NIGHT:
NO SERVICE: \$20
ELECTRICITY: \$30

DAY USE: \$5

SEASON DAY PASS: \$75

BOAT LAUNCH: \$15

BOAT LAUNCH SEASON PASS: \$150

Located 24 km (14 mi) west of Medicine Hat along the
 Holsom Road, secondary Hwy 523.
 Or, from Hwy 3, 7.5 km east of Seven Persons, turn North
 onto Hwy 523; travel 18 km (8 km N, 5 km E, 2.5 km N,
 then 1.6 km W across dam, 0.75 km S)





CAVAN LAKE

INFO: 403-979-1788

67 CAMPING SITES

49 POWER SITES

www.cypress.ab.ca

\$15/NIGHT \$25/NIGHT WITH POWER

17 KM EAST OF MEDICINE HAT OUTSKIRTS,
HALFWAY BETWEEN DUNMORE AND IRVINE, TURN
SOUTH ONTO RANGE ROAD 40 AND TRAVEL 5 KM.

Cavan Lake Campground

Surrounded by gently rolling hills of native grass, Cavan Lake provides water sport and play opportunities in the southeast corner of Alberta. This small reservoir offers a length of beach, adjacent to the boat launch. Spring runoff water in Gros Ventre Creek is captured in this small reservoir and is used to supply the Ross Creek Irrigation District when water supplies are adequate. The reservoir is stocked with trout, so campers can dangle a line when out on a leisurely canoe trip or from shore.

If you like a low camping fee, this is the place to go. A play ground is available for children and is situated in the middle of a green strip by the 49 campsites with power. Another 18 sites round out the available camping.



Travel 3 km west of Mountain View, turn south at signed intersection; 3 km to Payne Lake, road dead ends at Lake.

Payne Lake Provincial Recreation Area

Payne Lake is an easily accessible trout lake where the scenery makes a day's fishing worthwhile even on the rare occasion when you go home fishless. This popular fishing spot just west and south of the community of Mountain View is a reservoir bounded by forest on its south side and prairie on the north. Of the two campgrounds, one is heavily treed and the other is in open grassland.

Just 3 km off Hwy 5 going to Waterton National Park, this recreation area is used year-round. Ice fishing is at times more productive than the summer pastime of leisurely leaving a line in the water while you snooze on the grass. Facilities are a bit rustic, but the scenery and fishing make this worth the stop. Canoes and motorized fishing boats are common on the lake.

For those looking for a spring hike, a road/trail leading southward from the reservoir to a smaller, higher-elevation lake is bounded by a carpet of Snow Lilies and Shooting Stars most May long-weekends.

This reservoir supplies water to three "mountain" irrigation districts: Mountain View, Leavitt, and Aetna, and it is operated by Alberta Environment.



Payne Lake Provincial Recreation Area
JANUARY 1 - DECEMBER 31 46 UNSERVICED SITES

\$24/NIGHT 1-888-653-2522

WWW.ALBERTAPARKS.CA

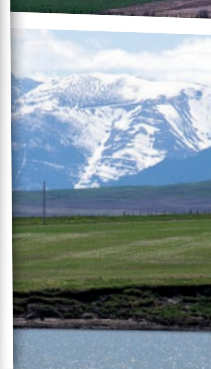


Waterton Reservoir Provincial Recreation Area

Majestic mountains form the backdrop for the Waterton Reservoir Provincial Recreation Area. On a calm day, water-borne reflections of mountains and puffy clouds in blue skies are worthy of the artist's brush. Motor boats create the wake to give air to water skiers, but the sound of motors and skiers hardly scare the shorebirds and waterfowl that become accustomed to the noise. Winds common to the area drive sail boats and wind surfers alike.

For the fisherman, this reservoir is close enough to the mountains that the cold waters support a number of trout species and whitefish. Downstream of the dam as well, Rocky Mountain Whitefish, Rainbows, and Cutthroats will test your reflexes on the reel-end of a fly rod.

Twenty-five unserviced campsites are located on the northwest end of the reservoir. The beach grows in size as the reservoir is drawn down during the irrigation season to supply water to the farms to the east.



WATERTON RESERVOIR PROVINCIAL RECREATION AREA **403.382.4097**

25 UNSERVICED CAMPING SITES

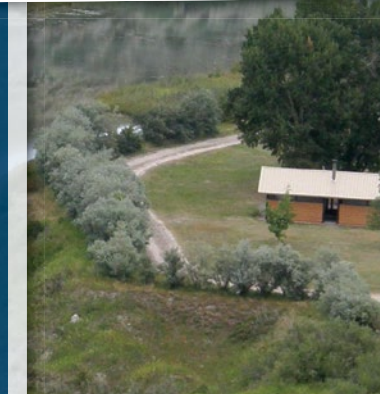
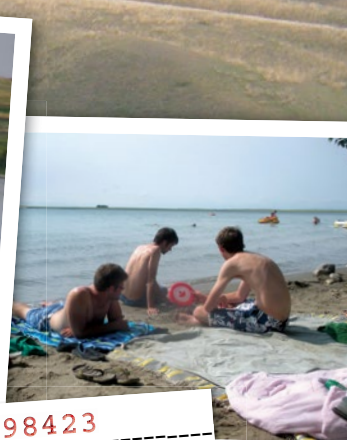
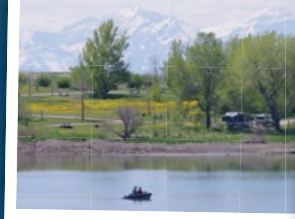
\$16.00 PER NIGHT

Off Hwy 5 turn north at Hwy 800 to Hillspring; travel 18 km to intersect Hwy 505, turning west traveling 5 km to west side of dam.

St. Mary Reservoir and Park

Built on an old oxbow of the St. Mary River, the main campground is nestled at the base of the St. Mary dam. The old river channel provides wading and swimming opportunities for children, and a playground is found right next to one of two camp kitchens. The 38 campsites have minimal development but sites are roomy for group camps and individuals.

Turn left on a signed gravel road just before the dam and you will find a smaller campground with 16 sites, a public boat launch and a private boat club in about 1 km. 3.5 km further west and south on the gravel road is a spot growing in popularity, a rustic sandy area called "Wally's Beach." This site features 12 campsites sand dunes flowing over the lower trunks of large poplars. The sandy area extends out as a broad shallow shelf, overlain by just a few feet of water. Because the beach area is on a small bay, the water is calmer and rubber rafts are popular with younger children. Older folk take to the very large reservoir for water skiing and for motorized trolling for trout, perch, walleye and pike. At one time when the reservoir was almost empty for repairing the dam's spillway, fossilized tracks of mastodons and horses were found at this site.



198423

ST. MARY RESERVOIR AND PARK

403.382.4097

CAMPING SEASON:
MID MAY - THANKSGIVING

\$27/NIGHT

Off Hwy 5, turn west at Spring
Coulee onto Hwy 820;
6.5 km to the reservoir, 55 km SW
of Lethbridge on Hwy 5.

WWW.ALBERTAPARKS.CA

Jensen Reservoir Provincial Recreation Area

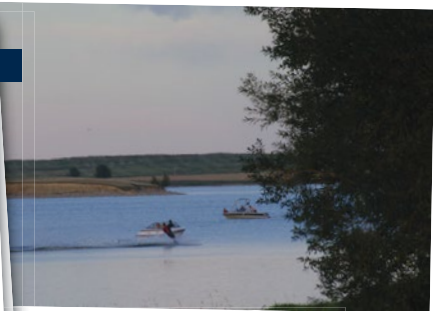
South of the town of Magrath and situated along the toe of the Milk River Ridge, Jensen Reservoir forms a link in the canal system between St. Mary and Milk River Ridge Reservoir. A day use area awaits those coming for a picnic, boating or fishing outing in a quiet setting on this smaller reservoir. Whitefish are abundant in the lake and in the canal downstream, and pike and walleye are often accommodating to fishermen, summer or winter. A number of small black-bladed wind mills located near the reservoir are landmarks that let you know you are getting close.

Nearby the reservoir are a number of cliffs used for rappelling and ice climbing. These cliffs are locally used to train youth and adults in safety and technique when rappelling or ice climbing on natural features.



From the Town of Magrath on Hwy 5, travel 8.5 km south on Hwy 62. Turn right at blue and white "Jensen Reservoir" sign. Drive 1.9 km west on the gravel road, then turn left on Range Road 222A and go 2.7 km in southwest direction along the canal and over the windmill hill to see the reservoir. Turn left at the fork in the road to go to the boat launch and picnic site.

*Photo courtesy of Government of Alberta.



RIDGE PARK 403-642-7021

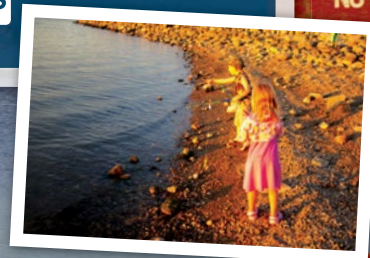
April 15 to October 15

SITES: 61 SERVICED SITES: 37
 POWER SITES: \$30 NO POWER: \$20 TENTING: \$20
 BOAT DOCK FEE: \$5

From Hwy 52, 2 km west of Raymond, turn south on 844; stay on Hwy 844 (changes to 506) for 19 km travelling south and east around Ridge Reservoir; turn at sign to park and drive slowly on 1.5 km of oiled road to park.

Ridge Park

Ridge Park, a locally popular campground on the south side of Milk River Ridge Reservoir, can be reached on Hwy 844 just west of Raymond or going east on Hwy 506 near Warner. The 16 km (10 mile) long reservoir has plenty of room for waterskiing and includes some variety of scenery on the water with several islands east of the campground. Fishing for walleye, pike and whitefish is productive and the bays on the south side of the reservoir yield some large pike. The reservoir has a relatively unknown rookery where seagulls from a large surrounding agricultural area come to spend the evening and many birds fill the sky near sunset. Along with the boat launch, two camp kitchens, a dock, and other amenities, a large grassed open play area adjoins the playground making this a favorite spot for young families. The water play area is a somewhat rocky beach that is roped off. Stay for a few nights of camping in one of the 61 camping sites or just come to play for the day.



Other Campgrounds (that rely on the irrigation system for water)

Calgary – Brooks (Hwy 1)

- **Calderon Acres** (near Strathmore)
calderonacres.com; 403-934-4430
- **Tillebrook Provincial Park** (near Brooks)
albertaparks.ca 403-362-4525

Coaldale – Medicine Hat (Hwy 3)

- **Owl's Nest Campground** (in Coaldale)
countyleth.ca; 403-345-1300
- **Indian Hills Lake McQuillan Campground** (near Coaldale)
lethcounty.ca; 403-345-5911
- **Taber Legion Park; Willow Park – Barnwell**
To book, contact the Town of Taber (403-223-5500)
and Village of Barnwell (223-4018), respectively.
- **Grassy Lake Municipal Campground**
403-655-2377
- **Centennial Park** (in Bow Island)
bowisland.com; 403-545-2522

Picture Butte (Hwy 25)

- **Picture Butte Campground** (in Picture Butte)
lethcounty.ca; 403-732-4555
- **Countryside Campground** (near Picture Butte)
lethcountry.ca; 403-732-5371 or 894-4926

- **Major “non-reservoir” parks.**

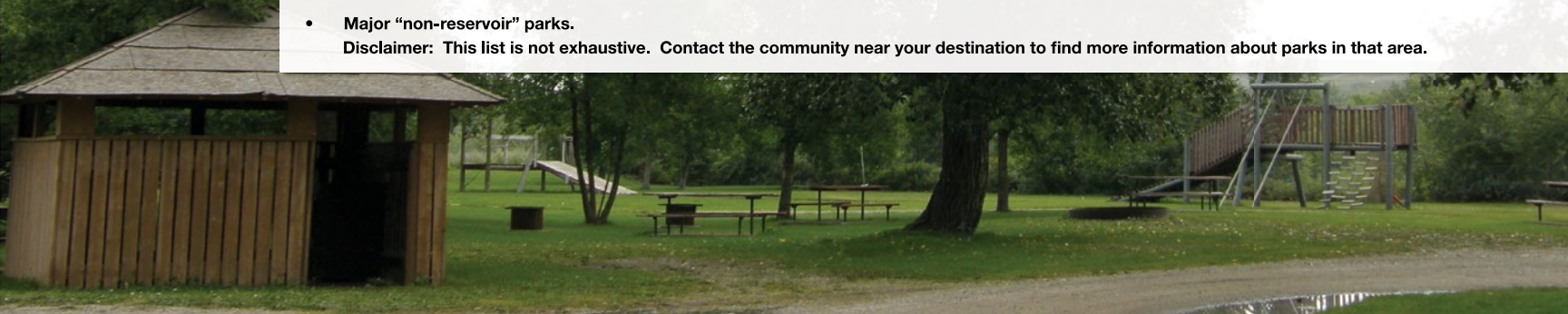
Disclaimer: This list is not exhaustive. Contact the community near your destination to find more information about parks in that area.

Waterton – Milk River (Hwy 5, Hwy 52, Hwy 4)

- **Spring Glen Park** (near Glenwood and Hillspring)
403-626-3233
- **Magrath Campground** (near Magrath)
magrath.ca; 403-758-3212
- **Perrett Park** (near Raymond)
raymond.ca (Search for Perrett Park); 403-752-3322
- **Tyrrell Lake (day use)**
sunsite.ualberta.ca (click T and choose Tyrrell)
- **Warner Lions RV Park** (in Warner)
milkriver.ca/tourism/accomodations; 403-642-3877
- **Gold Springs Park** (near Milk River)
campscout.com; 403-647-2277
- **Milk River RV Park**
milkriver.ca; 403-421-0020

Vauxhall – Brooks (Hwy 36, Hwy 526, Hwy 539)

- **King Arthur's Lake Front Resort** (near Vauxhall)
kingarthurslakefrontresort.com; 403-634-1824
- **Lions Campground, Vauxhall**
403-654-4052
- **Bow City Park**
403-362-6693



Golf Courses

(Keeping these courses lush and green relies on water from Alberta's irrigation districts)

Bow River Irrigation District

- **Vauxhall Golf and Country Club**
scoregolf.com; 403-654-4085
- **Enchant Golf Club**
scoregolf.com; 403-739-3771

Eastern Irrigation District

- **Bassano Golf Course**
countyofnewell.ab.ca; 403-641-4016
- **Brooks Golf Club**
brooksgolfclub.ca; 403-362-2998
- **Duchess Golf Club**
brooks-alberta.com/towns/duchess.html;
403-378-4710
- **Rolling Hills Golf Course**
brooks-alberta.com/towns/rolling.html;
403-964-2380
- **Meadows Executive Par 3 Course**
meadowsgolf.ca; 403-362-6477

Lethbridge Northern Irrigation District

- **Paradise Canyon Golf Resort**
playinparadise.com; 403-381-4653
- **Picture Butte Golf Club**
picturebuttegolf.com; 403-732-4157
- **Keho Lake Golf Course**
lethcounty.ca (Tourism); 403-824-3666

Magrath Irrigation District

- **Magrath Golf Course and Club**
magrathgolf.com; 403-758-3054

St. Mary River Irrigation District

- **Bow Island Golf Club**
bowisland.com/recreation.html; 403-545-2718
- **Connaught Golf Club (Medicine Hat)**
connaughtgolf.com; 403-526-0737
- **Cottonwood Coulee Golf Course & RV Park (M.H.)**
cottonwoodcouleegolfcourse.com; 403-529-1010
- **Desert Blume Golf Club (Medicine Hat)**
desertblume.com; 403-581-4653
- **Foremost Golf Club**
foremostalberta.com; 403-867-3733
- **Henderson Lake Golf Club**
hendersonlakegolf.com; 403-327-3652
- **Indian Hills Golf Club**
lethcounty.ca (Tourism); 403-345-5911
- **Land O'Lakes Golf Club**
landolakesgolf.com; 403-345-2208
- **Paradise Valley Par 3 Golf Course (M.H.)**
par3-executive-golf.com; 403-526-3330
- **Ross Creek Executive Par 3 Golf Course (M.H.)**
par3-executive-golf.com; 403-527-0006

Raymond Irrigation District

- **Raymond Golf Course**
raymondgolfcourse.com; 403-752-3743

Taber Irrigation District

- **Taber Golf Club**
tabergolf.ca; 403-223-2951

Western Irrigation District

- **Calderon Acres Golf Course (near Strathmore)**
calderonacres.com; 403-934-4430
- **Heatherglen Golf Course (near Calgary)**
heatherglengolf.com; 403-236-4653
- **Lakeside Golf Club**
lakesidegreens.com; 403-569-9155
- **Muirfield Lakes Golf Club**
muirfield.com; 403-983-3310
- **Strathmore Golf Club**
strathmoregolfclub.com; 403-934-2299
- **The Canal at Delacour**
thecanalatdelacour.com; 403-590-4515

Irrigation-Based Waters Used by Anglers

Reservoirs, lakes, ponds and canals, listed in the Alberta Guide to Sportfishing Regulations, that are supplied with irrigation water.

Badger Reservoir
Bassano Reservoir
Brooks Aquaduct Pond
Cann Lake
Carseland Irrigation Canal
Chestermere Lake
Chin Reservoir
Corner Lake
Cowoki Lake
CPR Lake
Crawling Valley Reservoir
Cross Coulee Reservoir
Dipping Vat Lake
Eagle Lake
Fincastle Lake

Forty Mile Reservoir
Hays/Grantham Reservoir
Henderson Lake
Horsefly Reservoir
Interlake (Johnson Lake)
J Reservoir
Jamison Lake
Jensen Reservoir
Keho Lake
Kitsum Reservoir
Lethbridge University Pond
Little Bow Reservoir
Lost Lake
Marsh Lake
McGregor Lake Reservoir

Medicine Hat College Pond
Milk River Ridge Reservoir
Murray Reservoir
Newel Lake
Nicholas Sheran Park Pond
Park Lake
Payne Lake
Picture Butte Reservoir
Rattle Snake Reservoir
(Sauder Reservoir)
Raymond Reservoir
Raymond Sugar Factory Pond
Riverstone Pond
Rock Lake
Rolling Hills Reservoir

Scope Reservoir
Shays Reservoir
Sherburne Lake Reservoir
Snake Lake
Stafford Reservoir
St. Mary Reservoir
Stone Hill Lake
Taber Reservoir
Tilley B Reservoir
Travers Reservoir
Twelve Mile Coulee Reservoir
Tyrell Lake
Upper Chin Reservoir
Yellow Lake





Help Us Improve this Booklet: Although we've tried to provide accurate information in this booklet, you may find that prices for services, facilities available, and distances to travel may be different than those described. Please phone 403-328-3063 to report correct information so we can improve this publication. You are also welcome to visit us at www.aipa.org and send us a comment by clicking on "Contact Us".